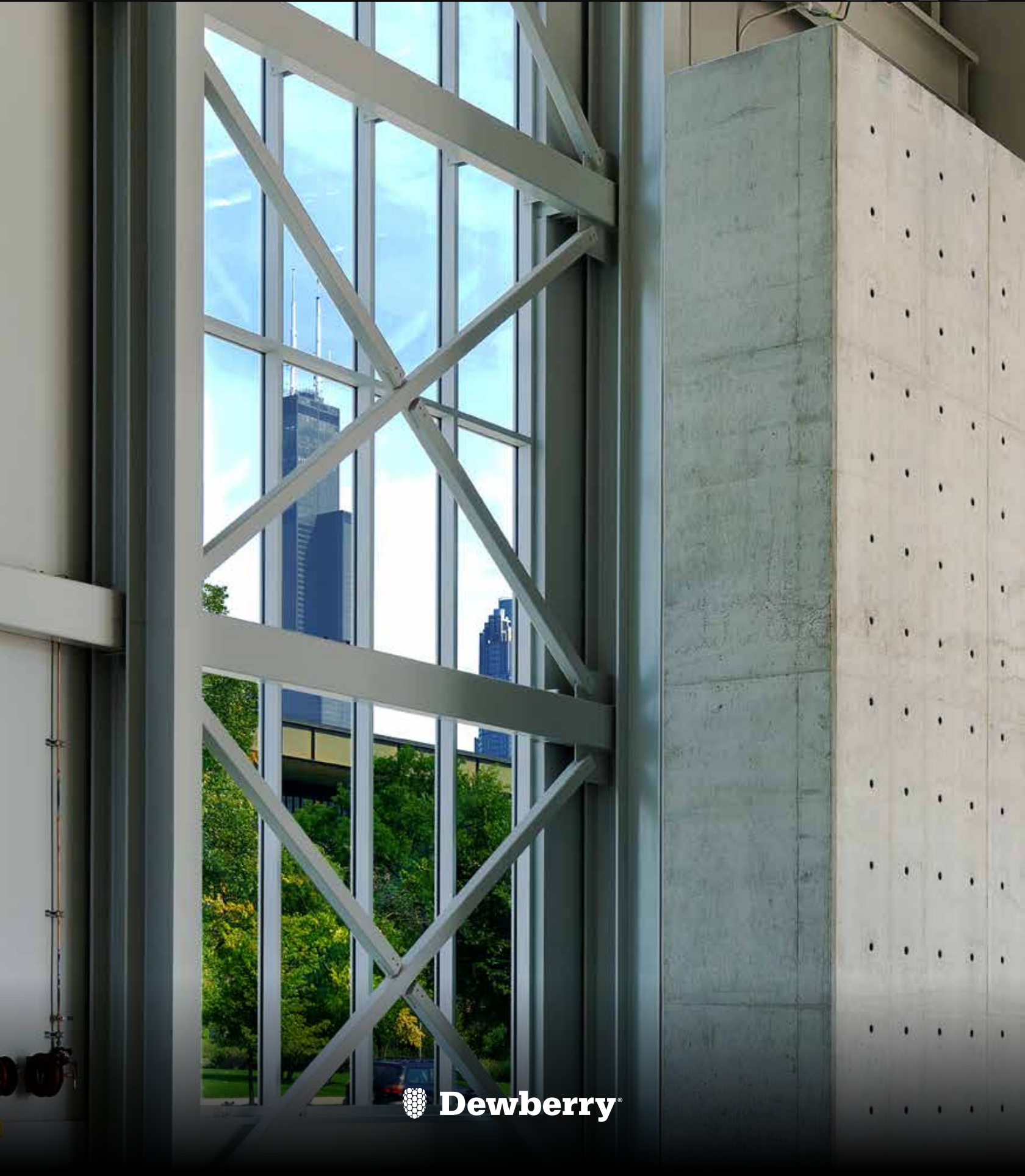


D I M E N S I O N S ®

A N N U A L R E V I E W 2019





# NEW YEAR. NEW DECADE. NEW OPPORTUNITY.

Each year, we gather our senior and emerging leadership together to build tighter bonds among them and reinforce our company's purpose. This year's meeting had the added responsibility of communicating our future trajectory. We are looking to the horizon—looking for those economic, regulatory, and political change indicators—and positioning ourselves for that future through strategic planning. In doing so, we have also revisited our company's Mission and Vision. We enlisted our current leadership to define our Mission and, recognizing that we must prepare our future leaders, asked them to develop our Vision.

At this same meeting, our chairman, Barry K. Dewberry, reinforced for us what will stay constant at Dewberry as we engage in the fluctuations of our industry.

- Dewberry is and will always be a family-owned company.
- As individuals, we chose this industry for a reason, and we point that purpose in the direction of community. Our goal is to improve the quality of life that surrounds us.
- Our work comes from a shared set of values, and as we grow in support of our communities and clients into new geographies and across the nation, we remember and will always reinforce these shared behaviors.
- We have a proud history and tradition. We have a strong foundation and corporate structure. Through years of learning and growing, we have developed great potential—and we are ready to put that stored potential to work for our clients.



Scan this code to watch  
Executive Chairman  
Barry K. Dewberry's talk,  
"Inventing our next future,  
one opportunity at a time."

I invite you to watch Barry's presentation yourself. It's a strong message. It has also reinforced for me why I come to work each day at Dewberry—to provide more opportunity for our employees to deliver the highest level of service solving interesting and complex problems. And to all of you, our clients and partners, we look forward to inventing the future with you, one opportunity at a time. 🍷

DONALD E. STONE, JR.

Chief Executive Officer

# DIMENSIONS® ANNUAL REVIEW 2019

## EXECUTIVE CHAIRMAN

Barry K. Dewberry

## CHAIRMAN EMERITUS AND FOUNDER

Sidney O. Dewberry

## CHIEF EXECUTIVE OFFICER

Donald E. Stone, Jr.

## CHIEF OPERATING OFFICER

Dan M. Pleasant


## BOARD OF DIRECTORS 2019

William T. (Terry) Boston, Barry K. Dewberry, Sidney O. Dewberry, Thomas L. Dewberry, Karen S. Grand Pré, Geraldine Knatz, Larry L. Melton, Jr., Donald E. Stone, Jr., and Merdith W.B. (Bo) Temple



DIMENSIONS® is published by Dewberry for the clients, associates, and employees of Dewberry.

Contact Molly Johnson with comments at [media@dewberry.com](mailto:media@dewberry.com)

©2020 Dewberry®. All rights reserved. DIMENSIONS® and  are registered trademarks of Dewberry Engineers Inc.

## ON THE COVER

University of Illinois at Chicago Engineering Innovation Building Chicago, IL


## OUR HEADQUARTERS

8401 Arlington Boulevard  
Fairfax, Virginia 22031-4666  
703.849.0100


 [www.dewberry.com](http://www.dewberry.com)

 [@TheDewberryWay](https://twitter.com/TheDewberryWay)

 [/company/dewberry/](https://www.linkedin.com/company/dewberry/)

 [@dewberryatwork](https://www.instagram.com/dewberryatwork)

 [/TheDewberryWay/](https://www.facebook.com/TheDewberryWay/)

 [/user/TheDewberryWay](https://www.youtube.com/user/TheDewberryWay)

Craig Johnson, PE, 24GE03157500  
Dewberry Engineers Inc., 24GA8047600

## IN THIS ISSUE

| 1

Collaborative Efforts in Sacramento Lead to Growth and Planning for the Future

| 3

Program Management for One of Florida's Largest Transportation Networks

| 5

Increasing Resilience in the Sunshine State

| 7

Rehabbing the Colman Tunnel

| 9

2019 In Review: Notable Projects

Take a look at project highlights across the country

| 29

2019 Recognition for our Communities and Projects

## OUR MISSION

Dewberry is a nationwide firm of planning, design, and construction professionals. We create responsible and innovative solutions for those who own, operate, and maintain natural and built environments. We value lasting relationships, achieving our clients' visions, and celebrating in their success.

## OUR VISION

CREATE VALUE FOR OUR CLIENTS.  
IMPROVE OUR COMMUNITIES.  
EMPOWER OUR EMPLOYEES.  
EXPAND OUR REACH.

# COLLABORATIVE EFFORTS IN SACRAMENTO LEAD TO GROWTH AND PLANNING FOR THE FUTURE

## Diversifying the Workload in an Office is the Key to Stabilizing a Practice

Like many firms in the design and construction industry, Dewberry's Sacramento, California, office faces the challenge of recruiting new staff, keeping current staff engaged, and giving people the opportunity to develop their skills and experience. Associate Principal and Manager of Dewberry's Sacramento office Erica Nelles, AIA, LEED AP, says, "The three main things our team is focusing on is leveraging the expertise we already have, diversifying our workload, and getting all levels of staff to engage in mentorship in order to help grow the office and contribute to succession planning."

Dewberry's architectural practice has experience in several markets, and the Sacramento office used that national subject matter expertise to expand into public safety, civic buildings, and commercial interior projects, which has allowed the office to grow and leverage new talent, as well as retain staff with new opportunities. Building and maintaining relationships has been a key to diversifying workload. The office is working on a variety of smaller projects to develop relationships with new clients throughout their organizations and give junior staff

members more transparency and engagement opportunities on projects—in design, production, and management capacities.

Staff members with five to six years of experience are taking recent graduates and interns under their wings. The more experienced professionals are offering technical and client management advice to all staff, and helping to foster relationships between younger team members and clients. "With the addition of new projects and a larger team, we are seeing all levels of employees take on a mentorship role organically, which has strengthened the relationships and comradery throughout the office," says Nelles.

New opportunities and strong mentorship have helped the Sacramento office develop a strategy to address changing industry dynamics and plan for the future. 🍷

“ WITH THE ADDITION OF NEW PROJECTS AND A LARGER TEAM, WE ARE SEEING ALL LEVELS OF EMPLOYEES TAKE ON A MENTORSHIP ROLE ORGANICALLY, WHICH HAS STRENGTHENED THE RELATIONSHIPS AND COMRADERY THROUGHOUT THE OFFICE. ”

ERICA NELLES



# PROGRAM MANAGEMENT FOR ONE OF FLORIDA'S LARGEST TRANSPORTATION NETWORKS

The Central Florida Expressway Authority (CFX) manages one of the state's most modern infrastructure systems. Its network includes 118 centerline miles of limited access expressways, 824 lane miles, 339 bridges, and 323 tolled lanes. In 2014, CFX was established to build and maintain regional transportation infrastructure and alleviate traffic congestion across Central Florida, which includes the counties of Brevard, Lake, Orange, Osceola, and Seminole. Separate from the Florida Department of Transportation, CFX receives funding generated through toll roads instead of tax dollars, which allows CFX to create new and improved transportation infrastructure with locally collected user tolls.

## UTILIZING ADVANCED TECHNOLOGY TO ACCOMMODATE GROWTH

CFX uses advanced technology, including traffic counters and intelligent transportation systems, to monitor traffic and reduce delays on its system. With its member counties' current population totaling 3.1 million and a projected 30% growth by the year 2030—in addition to 75 million visitors annually—CFX is constantly improving infrastructure to support the growth of vehicular traffic from both local residents and tourists.

Awarded the general engineering consultant (GEC) contract in 2016, Dewberry supports the delivery of CFX's \$2.5 billion five-year work plan, providing a variety of services across multiple disciplines, including program management, engineering, planning, environmental assessments and permitting, right-of-way, landscape architecture, and multimodal/transit system support.

Dewberry's work authorizations have included project management, review, planning, and permitting for nine roadway widening projects, seven alignment studies, and 25 miscellaneous improvement projects, and implementing an asset management program for CFX's existing infrastructure.

## AWARD-WINNING PROJECTS

CFX's transportation system also highlights Central Florida's natural beauty and habitats. Dewberry's team of experienced landscape architects have supported CFX in the design of aesthetically pleasing highways, interchanges, and ramps. Project awards include the 2019 Florida Nursery, Growers and Landscape Association Award for Landscape Installation/Renovation



Central Florida's steady growth creates opportunities for CFX to build and expand a transportation network.

– Government for the State Road 408 Raised Median Project; 2019 Florida Nursery, Growers and Landscape Association Award for Landscape Installation/Renovation – Government for the State Road 429/State Road 414 System Interchange Landscape

Improvements Phase II; and the 2019 IBTTA Social Responsibility Award for the Wekiva Parkway (State Road 429).

As program manager, Dewberry provides the daily, direct communication and management

necessary to identify and provide engineering resources, prioritize deliverables, and deliver quality. Dewberry will continue to support CFX's goal of being a world class transportation system under this GEC contract. 🍷



CFX was awarded the 2019 IBTTA Social Responsibility Award for the Wekiva Parkway (State Road 429).

# INCREASING RESILIENCE IN THE SUNSHINE STATE

## Lidar Collection Will Support New Florida Maps

In 2017, three of the five costliest storms in U.S. history—Hurricanes Harvey, Maria, and Irma—struck the state of Florida. Hurricane Irma in particular caused catastrophic property damage, estimated by the National Oceanic and Atmospheric Administration at more than \$50 billion. Most of the damage resulted from excessive flooding and high winds.

Florida's flat, low-lying topography is vulnerable to the impact of major hurricanes, which can cause significant changes to the land and water flow, change the profile of flood-prone communities, and potentially create newly vulnerable areas. With Hurricane Irma altering the landscape through most of the Florida peninsula, the Federal Emergency Management Agency (FEMA) required new floodplain models based on updated lidar data.

### THE FLORIDA PENINSULA PROJECT: A JOINT EFFORT

The Florida Division of Emergency Management, the Florida Department of Transportation, the Florida Department of Environmental Protection, and the five Florida Water Management Districts, working in cooperation


with the U.S. Geological Survey (USGS), have joined together to update the topology data throughout Florida to a quality level 1 specification, selecting Dewberry as the prime contractor. As six counties had been remapped since 2017, as well as a large portion of the Florida Everglades, those areas were not included in the 34,000-square-mile Florida Peninsula Project.

Deliverables will include airborne lidar data acquisition, ground survey, and preparation of bare earth point cloud and digital elevation model (DEM) products. The products will support the state's hydrological and hydraulic modeling, FEMA Flood Zone and Digital Flood Insurance Rate Map updates, repetitive loss modeling, emergency evacuation routing, first responder activities during flood events, and recovery and resilience planning for future events. According to Jason Ray, GIS administrator for the Florida Division of Emergency Management, "This high-quality data will be leveraged from a wide range of stakeholders through innovative tools and analyses leading to enhanced decision-making across the state."

In addition to the challenge of collecting data for such a large area, involving complex scheduling of nearly a dozen

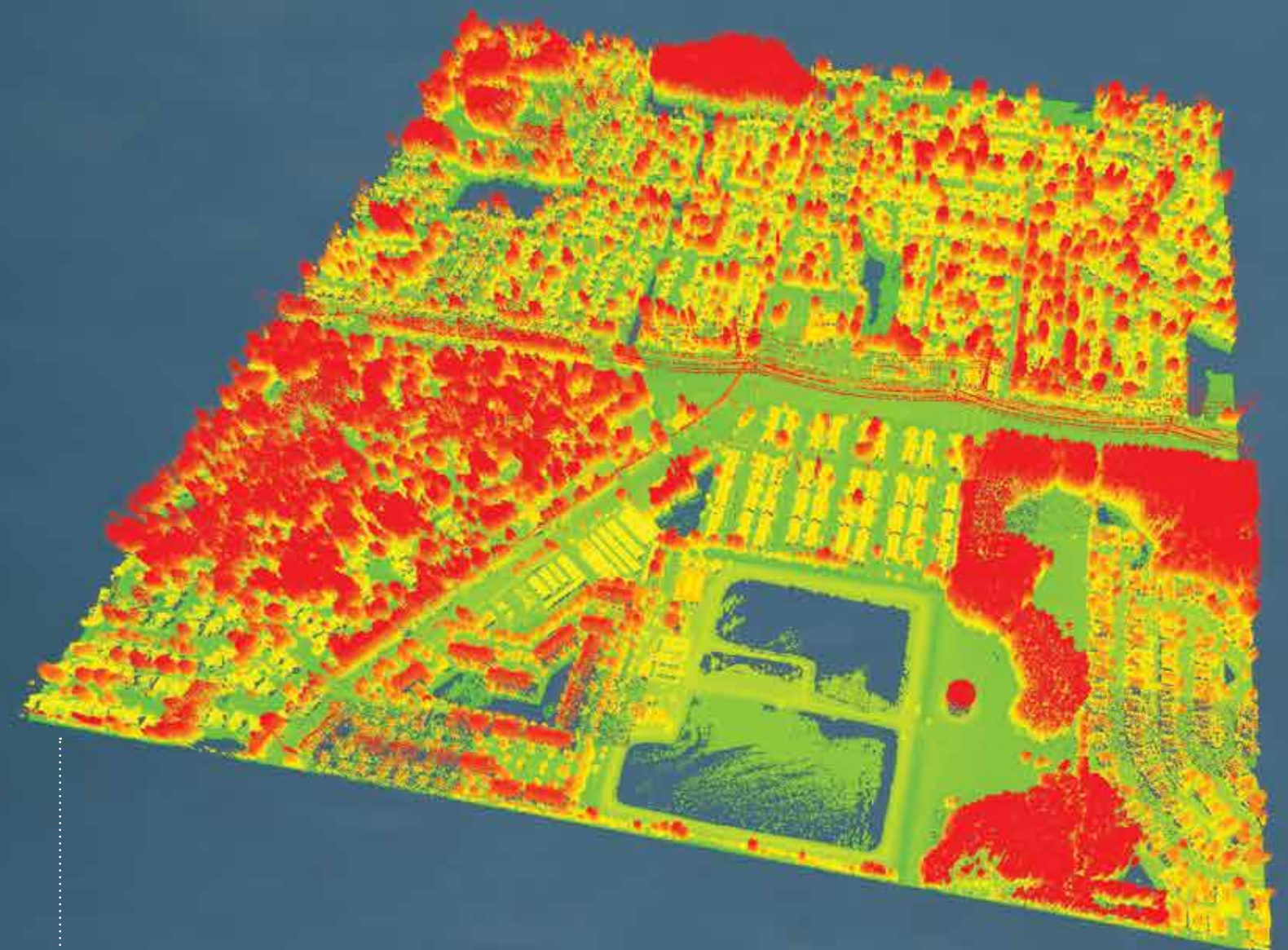
aircraft simultaneously, the Dewberry team must also address complications presented by the weather, tides, and airspace restrictions. The mapping is projected to be complete by early 2021, with the data becoming part of the high-resolution, elevation data inventory within the USGS 3D Elevation Program (3DEP) and the US National Map by late 2021.

### SHARING GEOSPATIAL DATA

"This project supports the Geographic Information Office's objectives of geospatial data sharing across agency and geographic boundaries, while reducing redundancies," says Kimberly Jackson, GISP, Florida state geographic information officer. "Access to this statewide spatial dataset will immediately and positively impact businesses, universities, non-governmental organizations, water management districts, and state agencies in Florida as outlined in the Florida Department of Environmental Protection's 2018 Statewide LiDAR Assessment report to the legislature." 

“ THIS HIGH-QUALITY DATA WILL BE LEVERAGED FROM A WIDE RANGE OF STAKEHOLDERS THROUGH INNOVATIVE TOOLS AND ANALYSES LEADING TO ENHANCED DECISION-MAKING ACROSS THE STATE. ”

JASON RAY



Dewberry is currently collecting lidar data for 34,000 square miles of the Florida peninsula to support updated geospatial data sharing for multiple agencies.

# REHABBING THE COLSMAN TUNNEL

## Design-Build Delivery Yields Innovative Trenchless Approach

The Colzman Tunnel has been a critical infrastructure component in the Southgate Water and Sanitation District's sanitary sewer system for more than 40 years. The 7,614-foot-long tunnel collects and conveys 100% of the district's 12.4-MGD sanitary sewer peak flow underneath the suburban community of Centennial, Colorado, approximately 15 miles south of Denver.

### EXPLORING OPTIONS THROUGH DESIGN-BUILD COLLABORATION

In 2015, a multi-sensor robotic inspection performed by the district confirmed that the semi-elliptical, hard-rock tunnel, which reaches a maximum depth of 90 feet, had deteriorated due to decades of conveying corrosive wastewater. The district, which provides service to more than 80,000 customers, recognized that a replacement or major rehabilitation was in order, and initially envisioned a standard tunneling project with a redundant parallel system—a tried and tested solution that would have cost more than \$30 million and taken two to three years to complete.

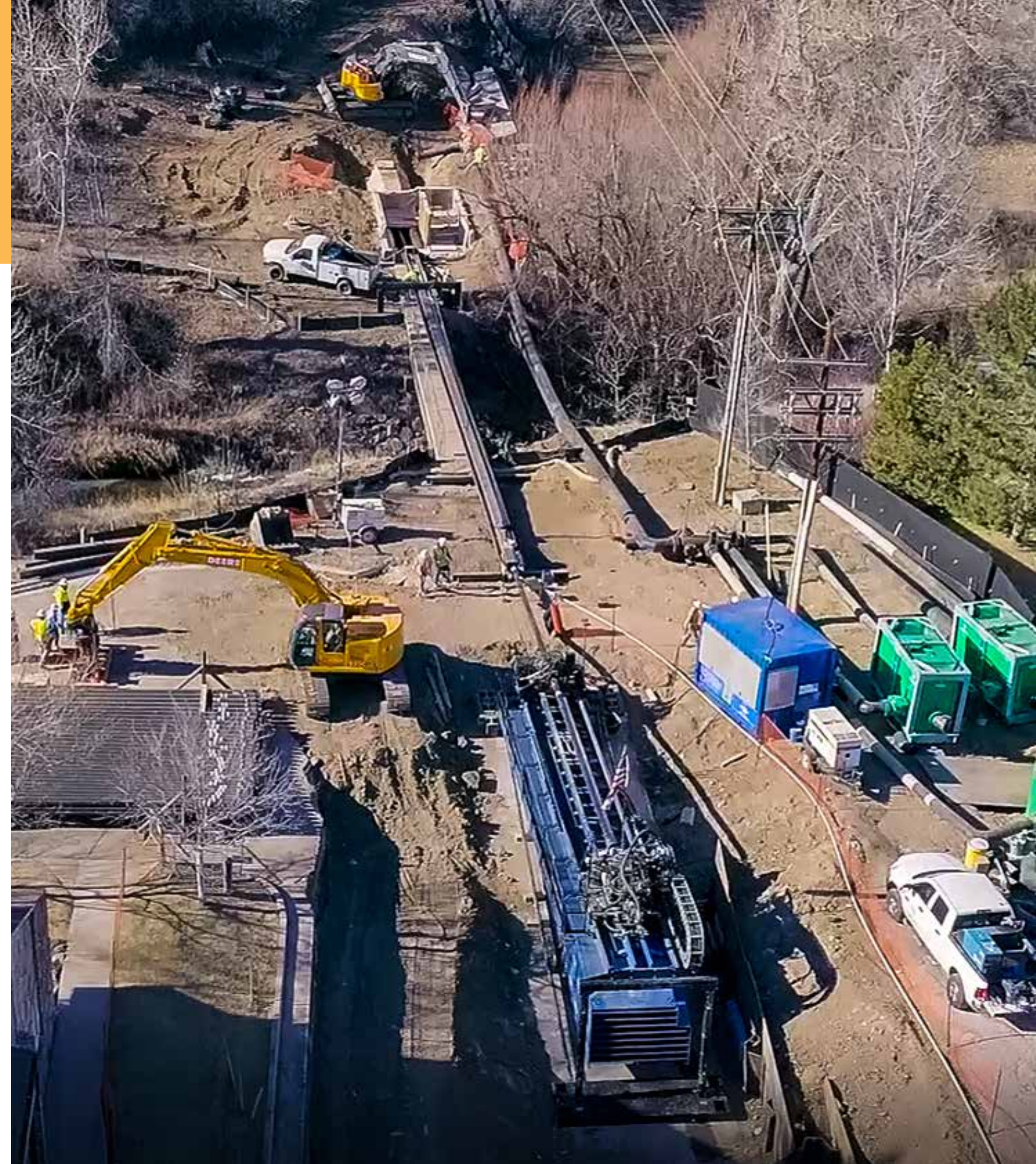
Working as a design-build team, Dewberry and Garney Construction evaluated several options, then proposed an innovative but less costly alternative: sliplining the tunnel with a 48-inch high-density polyethylene (HDPE) pipe using a horizontal directional drilling (HDD)

system. Sliplining is a trenchless technology that involves the insertion of a new pipe within the larger "host" pipe, and then grouting the annular space between the two pipes. Although more complicated to execute, this approach would save the district from the expense of boring a new tunnel and installing an unnecessary, redundant sanitary line, and facilitate installation in live sewer flows.

### A CALCULATED RISK SAVES TIME AND MONEY

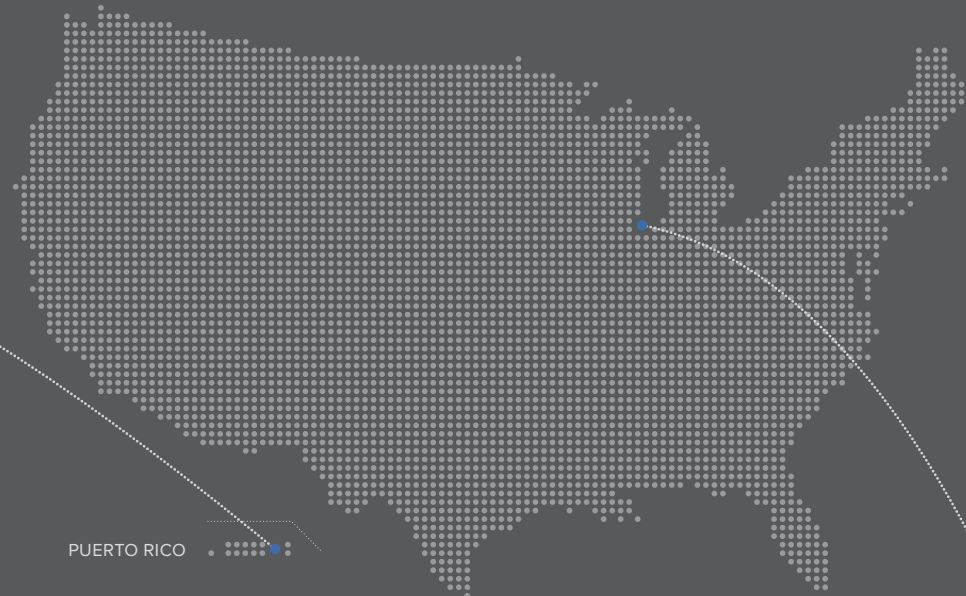
The use of the HDD system for the large-scale installation of a continuous pipe within the Colzman Tunnel was among the key innovations. Never before attempted in an active tunnel of this length—nearly 1.5 miles—the sliplining approach and use of HDD equipment for the pipeline pull-in would ultimately enable the project to be completed in six months and cost just \$8 million. The solution also minimized the project footprint and impact on vehicular traffic during construction.

The Dewberry/Garney Construction team also proposed an unconventional method for the painstaking work of grouting the annular space between the new pipeline and the existing tunnel, recommending a barometric loop to keep the pipeline full during grouting to mitigate thermal expansion and pipeline buoyancy. Injection points were drilled for the grouting over stretches of 600 feet, up to 90 feet underground, with grout placement verified through the use of specially built cameras. The design-build collaboration also facilitated the development of solutions to other challenges, including identifying the exact geometry of the existing tunnel without reliable records, and determining pipe loading/stresses while the lengthy HDPE pipeline was installed in the tunnel with no intermediate access in live flow. 🍷



A common method of installation in other direct-bury trenchless installations, HDD technology has rarely been used in sliplining projects for water/wastewater pipeline projects, and never for a project as ambitious as the Colzman Tunnel, which required a nearly 1.5-mile existing tunnel pipeline pull-in.

# 2019 IN REVIEW NOTABLE PROJECTS



PUERTO RICO

## FEDERICO DEGETAU FEDERAL OFFICE BUILDING AND THE CLEMENTE RUIZ NAZARIO U.S. COURTHOUSE

Hato Rey, PR

We assisted the General Services Administration with a modernization of these facilities to be consistent with the agency's sustainability goals. We performed design and construction phase services, including improvement and refurbishment of finishes in the public spaces and courtrooms, renovations of interior spaces and courtrooms, and a replacement of the building systems.



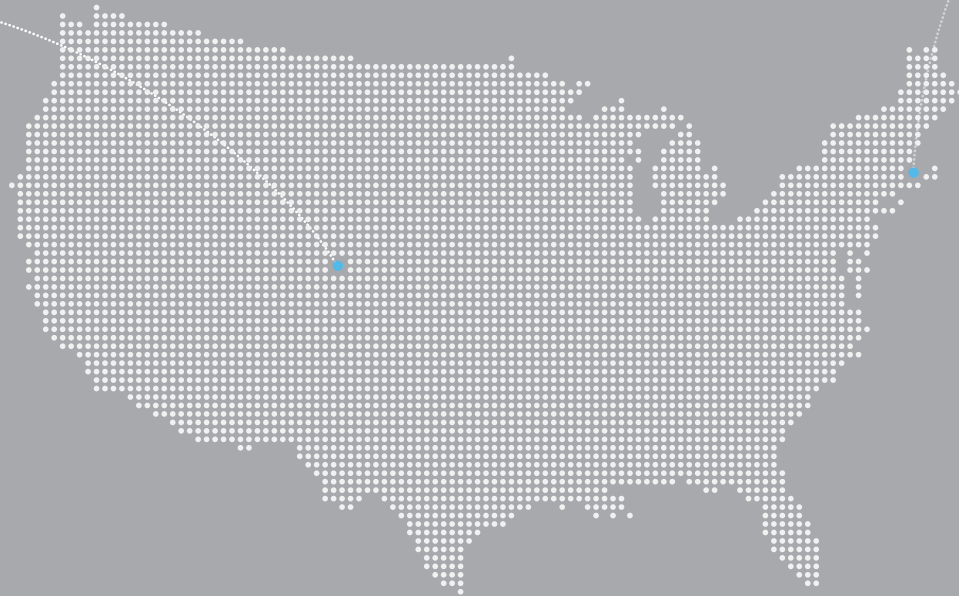
## UNIVERSITY OF ILLINOIS AT CHICAGO ENGINEERING INNOVATION BUILDING

Chicago, IL

With enrollment in the College of Engineering nearly doubling in the past 10 years, the University of Illinois at Chicago turned to us to create a new 57,500-square-foot Engineering Innovation Building for its Chemical Engineering, Civil and Materials Engineering, and Mechanical and Industrial Engineering Departments. Targeted to achieve LEED® Silver, the facility includes the only high-bay structural research laboratory in northeastern Illinois.



# NOTABLE PROJECTS



## **DOWNTOWN EAST LOUISVILLE DEVELOPMENT PHASE 1 AND 2 (DELO)** Louisville, CO

DeLo is a mixed-use, transit-oriented redevelopment of a brownfield site located directly east of historic downtown Louisville. We provided entitlement, master planning, site development, water resources, and engineering for this phased project, which included a downstream drainage attenuation facility and public funding to create a regional urban park to kick start redevelopment within the area.



## **BLUE HILL OBSERVATORY WEATHER TOWER**

Milton, MA

The Blue Hill Observatory holds the record for the longest span of continuous weather data collected and is home of the oldest climate record in the nation. The building was scheduled to be renovated and the weather equipment needed to be removed from the roof. To help maintain the continuous collection of data, we were tasked with the engineering and rock anchor foundation design for a self-supporting tower to hold the weather equipment during the renovation.



# NOTABLE PROJECTS



## ROUTE 606 LOUDOUN COUNTY PARKWAY/ OLD OX ROAD RECONSTRUCTION AND WIDENING Loudoun County, VA

Our design-build team with Shirley Contracting Company LLC reconstructed and widened 5.5 miles of Route 606 to four lanes while accommodating an ultimate eight-lane typical section. A new bridge over the Horsepen Dam auxiliary spillway and extensive dam improvements were also completed. Our alternate typical section reduced the project cost, allowing VDOT to add the Loudoun County Parkway intersection improvements to the project scope.



## VIRGINIA TECH DRONE PARK Blacksburg, VA

Our full-service, national expertise was key to helping Virginia Tech identify the validity of project goals, constructability, and cost in a short period of time. The unmanned aerial vehicle park is a one-acre netted enclosure for testing drones. We designed the park, which also includes a classroom trailer, and performed stormwater management, site/civil, mechanical, electrical, plumbing, and structural engineering.



# NOTABLE PROJECTS



## BUILDING AUTOMATION SYSTEMS UPGRADES CAMPUS MASTER PLAN

Raleigh, NC

North Carolina State University recognized a need to upgrade its aging Building Automation Systems, because it is committed to reducing energy consumption and improving energy efficiency on campus. Our study addressed immediate needs and assisted in master planning for future campus requirements consistent with providing a safe, secure, and inviting campus community.



## EVERGLADES NATIONAL PARK LIDAR

Florida

We assisted the U.S. Geological Survey and the National Park Service in environmental management of the Everglades National Park, including initiatives to address sea level rise, and help increase the predictive capability of hydrologic models and improve understanding of the park's diverse habitats and drainage characteristics.

We conducted topobathymetric lidar collection for 1211 square miles within the park.



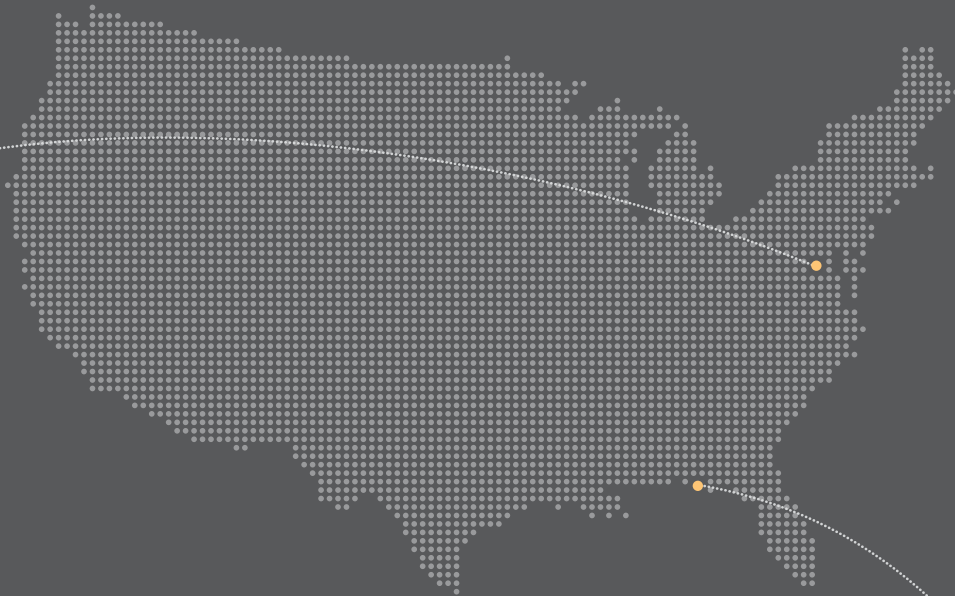
## PENNDOT DISTRICT 3-0 EMERGENCY FLOOD REPAIRS

Lycoming County, PA

In October 2016, a flash flood event destroyed two bridges along State Road 1003, washed out a pipe culvert, and caused the failure of a 75-foot embankment along Wallis Run. Resilience was a crucial objective for our design of the new bridges, roadway, and embankment repair in this flood-prone area.



# NOTABLE PROJECTS



## GLENN DRIVE TO SHAW ROAD DUCTBANK

Loudoun County, VA

We partnered with long-time client Dominion Energy to design a new, 4,800-linear-foot, eight-way duct electrical ductbank alongside a two- and four-lane, VDOT-owned road. We provided plan and profile design of the electrical ductbank, erosion and sediment control plans, topographic survey, wetland delineation, and independent third-party review of the erosion and stormwater management plan.

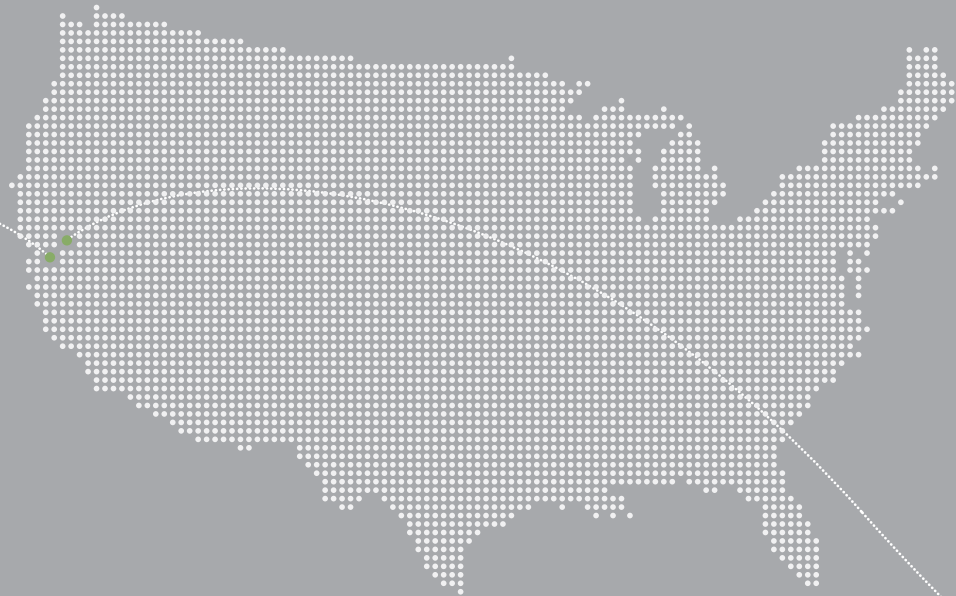


## CONTINUING SERVICES AND DISASTER RECOVERY

Mexico Beach, FL

Arriving in Mexico Beach—ground zero for Hurricane Michael—within 48 hours post-storm to assist with recovery, we met the city's aggressive schedule to rebuild critical infrastructure. Within four months, we performed design, permitting, and bidding for nine projects, totaling more than \$8.6 million in construction, and incorporated resilience and mitigation into the designs. Projects included city-wide utility repairs, a 17,000-linear-foot emergency berm, bridge replacement, the master lift station, dredging, and beach accesses.

# NOTABLE PROJECTS



## 11TH STREET EAST TRACY OVERHEAD BRIDGE REPLACEMENT Tracy, CA

Originally constructed in 1936 and widened in 1960, this bridge had significant pavement deterioration and spalling. The existing 1,441-foot long, 64-foot wide, multiple simple-span bridge crossed over three separate Union Pacific Railroad tracks at a skewed angle. We designed a shorter, highly skewed structure in combination with retaining walls and embankment fill at the approaches to span the mainline tracks. This minimized the impacts to the residential driveways and adjacent roadway intersections and will accommodate a future planned aerial intersection without needing to widen the bridge over the railroad tracks.



## WESTERN PLACERVILLE INTERCHANGES, PHASE 2 Placerville, CA

In order to address current and projected regional and local traffic demands on the state and local roadway systems, this project provided improvements between the Forni Road/Placerville Drive/U.S. 50 Interchange and the Ray Lawyer Drive Overcrossing for motorists, bicyclists, pedestrians, and public transit users. Project elements included a new off-ramp, signalized intersection, and park and ride lot. We performed construction management services and extensive utility relocation coordination.



# NOTABLE PROJECTS



## CONE HEALTH MEBANE CANCER CENTER PHARMACY CONVERSION Greensboro, NC

The U.S. Pharmacopeia (USP) Convention's Chapter 800, "Hazardous Drugs—Handling in Healthcare Settings," became effective December 1, 2019. In order to convert the pharmacy to this new standard, we installed a new 3,000 CFM air handling unit (AHU) and provided electrical engineering services for the addition of emergency power to the area that serves the new AHU and future loads.

## GENE THERAPY WASTE TREATABILITY TESTING Raleigh, NC

For a large-scale pharmaceutical manufacturer, we conducted treatability testing in our Raleigh laboratory for new biopharmaceutical wastewater, which contains a unique compound used in the production of gene therapies. Testing demonstrated the waste is biodegradable and does not cause inhibition or aquatic toxicity. With favorable testing results, the client will discharge the wastes to the municipal wastewater treatment plant, resulting in more than \$2 million in annual savings.



# NOTABLE PROJECTS



## HUNTS POINT INTERSTATE ACCESS IMPROVEMENT PROJECT ENVIRONMENTAL IMPACT STATEMENT

Bronx, NY

The \$1.7-billion Hunts Point project will reduce traffic and improve access to critical locations. New York State Governor Cuomo announced the fast-tracked project in March 2017, and we started the environmental impact statement (EIS) process that May. By synchronizing our process with the federal government's new mandates to shorten environmental review times, the EIS was completed in an expedited 23 months.



## ELIZABETH RIVER SHORELINE

Norfolk, VA

This shoreline project is a landscape approach to restoring a river and building a legacy in sustainability and community leadership. Norfolk Southern Railroad engaged us to design and develop construction plans and specifications, and provide construction administration services for a living shoreline that stabilizes an embankment, contributes to the restoration of the Elizabeth River through the creation and protection of a wetlands and subaqueous habitat, protects railroad land and infrastructure, and delivers a signature environmental education and community enhancement project for the citizens of coastal Virginia.



## POST-HURRICANE HARVEY DISASTER ANALYTICS

Houston, TX

Working with the City of Houston, we partnered with Civis Analytics to analyze direct and indirect costs resulting from damage caused to residential and commercial structures by Hurricane Harvey. In total, we identified an additional 130,000 Houstonians impacted by the storm and more than \$1 billion in total residential damages previously unaccounted for.

# NOTABLE PROJECTS



## GARDEN STATE PARKWAY INTERCHANGE 163 IMPROVEMENTS

Paramus and Bergen County, NJ

Our design of the \$69 million Garden State Parkway Interchange 163 improvements helped to reduce vehicular traffic queues from occurring in the high-speed left lanes by the relocation of existing left-side exits to more conventional right-side exits. These improvements alleviated operational and safety issues along the ramps and the northbound and southbound mainline roadways.



## CENTER FOR MANUFACTURING ADVANCEMENT

Danville, VA

To target advanced manufacturing companies establishing or expanding their presence in southern Virginia, the Institute for Advanced Learning and Research is building a 51,250-square-foot Center for Manufacturing Advancement. This will provide support services to rapidly launch new advanced manufacturing companies, significantly reducing the traditional startup time it takes to become fully operational in a new facility. We are providing full design and construction administration services.





# 2019 RECOGNITION FOR OUR COMMUNITIES AND PROJECTS

## CORPORATE

- ★ **2019 EP Friendly Firm,** American Institute of Architects (AIA) Central States Emerging Professionals Committee
- ★ **Employer of the Year,** Women's Transportation Seminar (WTS) Central Florida Chapter
- ★ **Best Places to Work** in Pennsylvania
- ★ **Exemplary AXP Friendly Firm,** American Institute of Architects (AIA) Oklahoma
- ★ **Partner Conference Award,** Esri
- ★ **Top Design Firm of the Year,** *Engineering-News Record (ENR) Southeast*



## COMMUNITY FACILITIES

PICTURED ABOVE  
Glen Ellyn Police Headquarters

- Aurora Fire Station**  
Aurora, Illinois
- ★ **Merit Award,** Association of Licensed Architects
- Glen Ellyn Police Headquarters**  
Glen Ellyn, Illinois
- ★ **Justice Facilities Review Award — "Publication,"** AIA Academy of Architecture for Justice

## ENERGY

- Houston Methodist Clear Lake Central Utility Plant** Houston, Texas
- ★ **Best Project Award,** *ENR Texas and Louisiana*
- University of Virginia 35kV Routing Study and Design** Charlottesville, Virginia
- ★ **Merit Award,** American Council of Engineering Companies (ACEC)



## JUSTICE

PICTURED ABOVE  
Nazario U.S. Courthouse and Degetau Federal Office Building Renovation

- Nazario U.S. Courthouse and Degetau Federal Office Building Renovation** Hato Rey, Puerto Rico
- ★ **Platinum Award, Engineering Excellence Awards,** ACEC New York (NY)

## REAL ESTATE AND COMMERCIAL DEVELOPMENT

- Gaylord Rockies Resort and Convention Center** Aurora, Colorado
- ★ **Best Project Award in the residential/hospitality category,** Colorado/Wyoming/Dakotas section of *ENR Mountain States*
- ★ **Merit Award in the specialty construction category,** Colorado/Wyoming/Dakotas section of *ENR Mountain States*

## RISK, RESPONSE, AND RECOVERY

**Development and Testing of New York City's Climate Resiliency Design Guidelines**  
New York, New York

★ **Diamond Award, Engineering Excellence Awards, ACEC NY**



**Route 606** Loudoun County, Virginia

- ★ **Honorable Mention Award, Design-Build category,** Virginia Transportation Construction Alliance
- ★ **Honorable Mention Award,** Design-Build Institute of America Mid-Atlantic
- ★ **Outstanding Infrastructure Award Honorable Mention,** Heavy Construction Contractors Association

**State Road 82** Fort Myers, Florida

- ★ **Top Projects of the Year,** Roads & Bridges

## TRANSPORTATION

PICTURED ABOVE  
Route 606

**Assemblyman Herman Denny Farrell Pedestrian Bridge, Resident Engineering and Inspection Services**  
New York, New York

★ **Gold Award, Engineering Excellence Awards, ACEC NY**

**GSP Interchange 163 Improvements Project** New Jersey

- ★ **2019 Distinguished Engineering Award,** New Jersey Alliance for Action
- ★ **2019 Honor Award in Transportation,** ACEC New Jersey
- ★ **2019 Project of the Year <\$100 Million Award,** American Society of Civil Engineers New Jersey
- ★ **National Recognition Award, 2019 Engineering Excellence Awards, ACEC**

**I-64 Segment I** Fairfax, Virginia

★ **Merit Award, ACEC**

**LIRR Flushing Main Street Station ADA Accessibility Improvements**  
Long Island, New York

★ **Silver Award, Engineering Excellence Awards, ACEC NY**



## WATER

PICTURED ABOVE  
Newtown Creek  
DEP CSO Tributary

**City of Evans Wastewater Treatment Plant** Evans, Colorado

- ★ **Best Project Award in the water/environment category,** Colorado/Wyoming/Dakotas section of *ENR Mountain States*

**Kettle Creek**  
Colorado Springs, Colorado

- ★ **Best Project Award in the the specialty construction category,** Colorado/Wyoming/Dakotas section of *ENR Mountain States*

**Newtown Creek DEP CSO Tributary**  
Queens, New York

- ★ **Platinum Award, Engineering Excellence Awards, ACEC NY**



8401 Arlington Boulevard  
Fairfax, Virginia 22031-4666  
Address service requested

PRSRT STD  
U.S. POSTAGE  
PAID  
Elizabethtown, PA  
PERMIT NO. 61



www.dewberry.com

These eco-friendly, clear envelopes are made of 100% compostable materials.

# DEWBERRY EXPANDS RESOURCES IN CALIFORNIA

In 2019, Dewberry acquired California-based Drake Haglan and Associates, an 80-person firm serving private- and public-sector clients. Founded in 2007, the firm is headquartered in the Sacramento metro area with offices in Ranch Cordova, Fresno, Manteca, and Modesto, and offers services in transportation planning and design, water infrastructure design, water resources, environmental studies and engineering, public outreach, grant management, and construction management.



In announcing the acquisition, Dewberry Chief Operating Officer Dan Pleasant, PE, states, "The culture at Drake Haglan is one of the many reasons we're excited to welcome them to the team. The employees are passionate about serving clients, their communities, and doing high-quality work, and these are also important values for Dewberry."

As Dewberry | Drake Haglan, the firm continues under current leadership and is integrated into the Western Region organization, led by Dewberry Senior Vice President Rachel Vandenberg, PE.

"By adding their expertise to the team, we're confident we'll be better able to support clients' most pressing challenges," says Vandenberg.

"Dewberry was looking for a strong firm that could help shape its California growth, and we wanted to grow our capacity to support clients. With our shared values and approach to work, we're excited to see what we can achieve together," says Dennis Haglan, PE, Vice President and co-founder of Drake Haglan and Associates. 